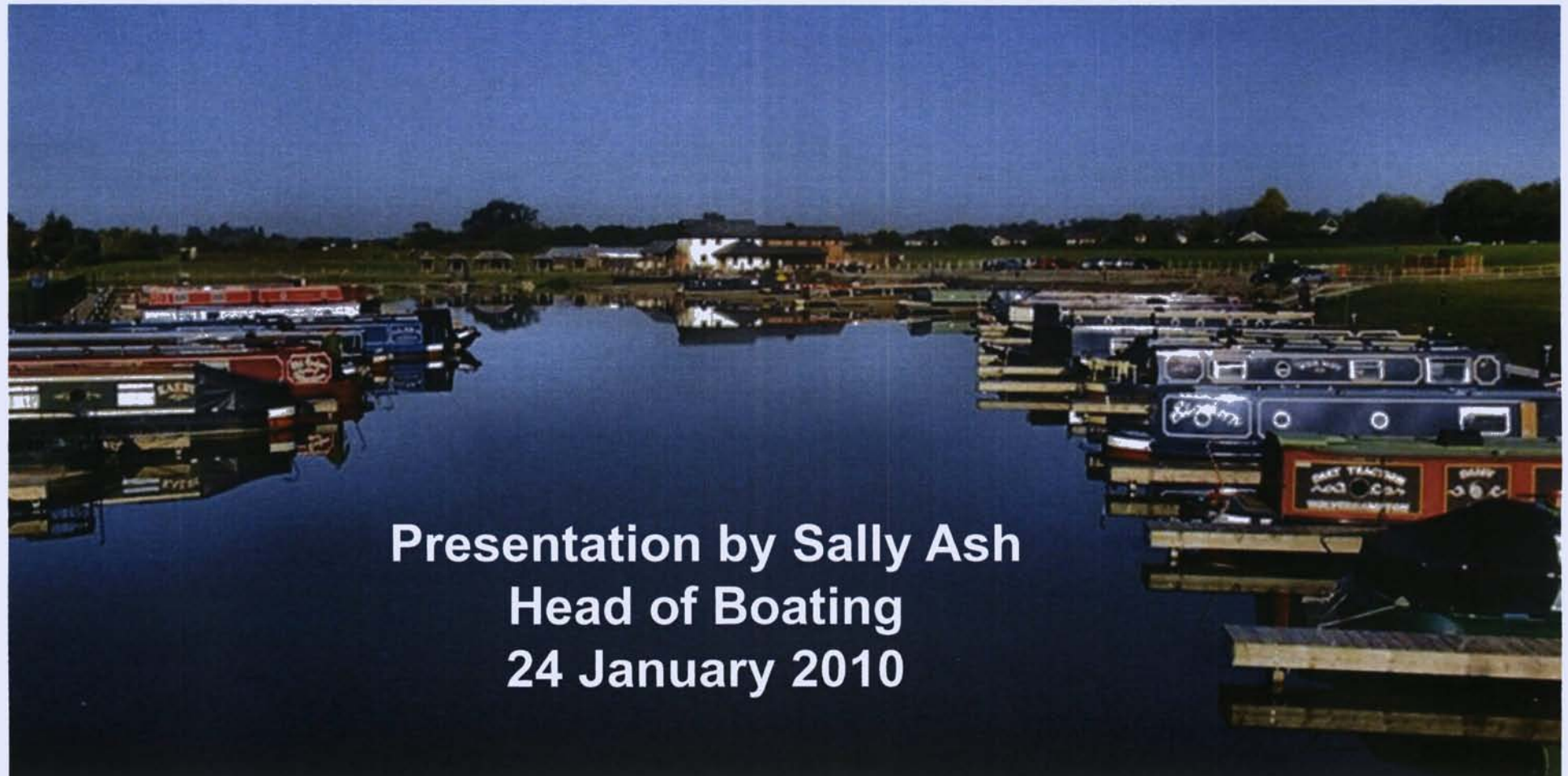
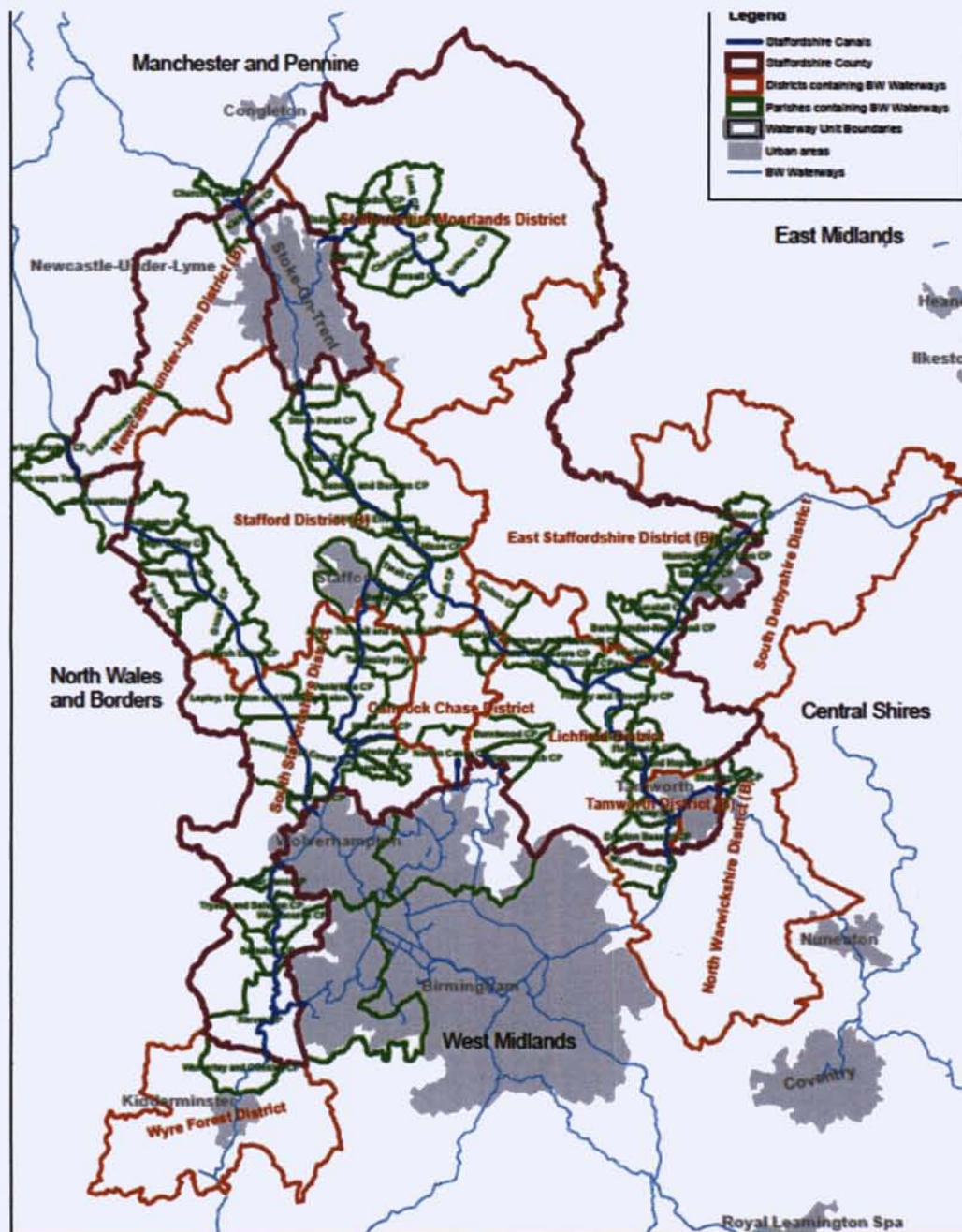




WATERWAYS AND PUBLIC INVOLVEMENT IN STAFFORDSHIRE



Staffordshire Waterways + local boundaries



Staffordshire Boundaries

1:450,000

Produced by: mrc
Page 000: A4
LAYERED PDF
05.01.2011



A scenic view of a canal with a bridge and buildings in the background. The canal is calm, reflecting the surrounding greenery and the bridge. The bridge is a simple stone structure with a single arch. In the background, there are several buildings, including a large one with a sign that says "The Old Mill". The trees are lush and green, and the overall atmosphere is peaceful and scenic.

Go to www.waterscape.com to cast your vote for its name!

A new waterways charity

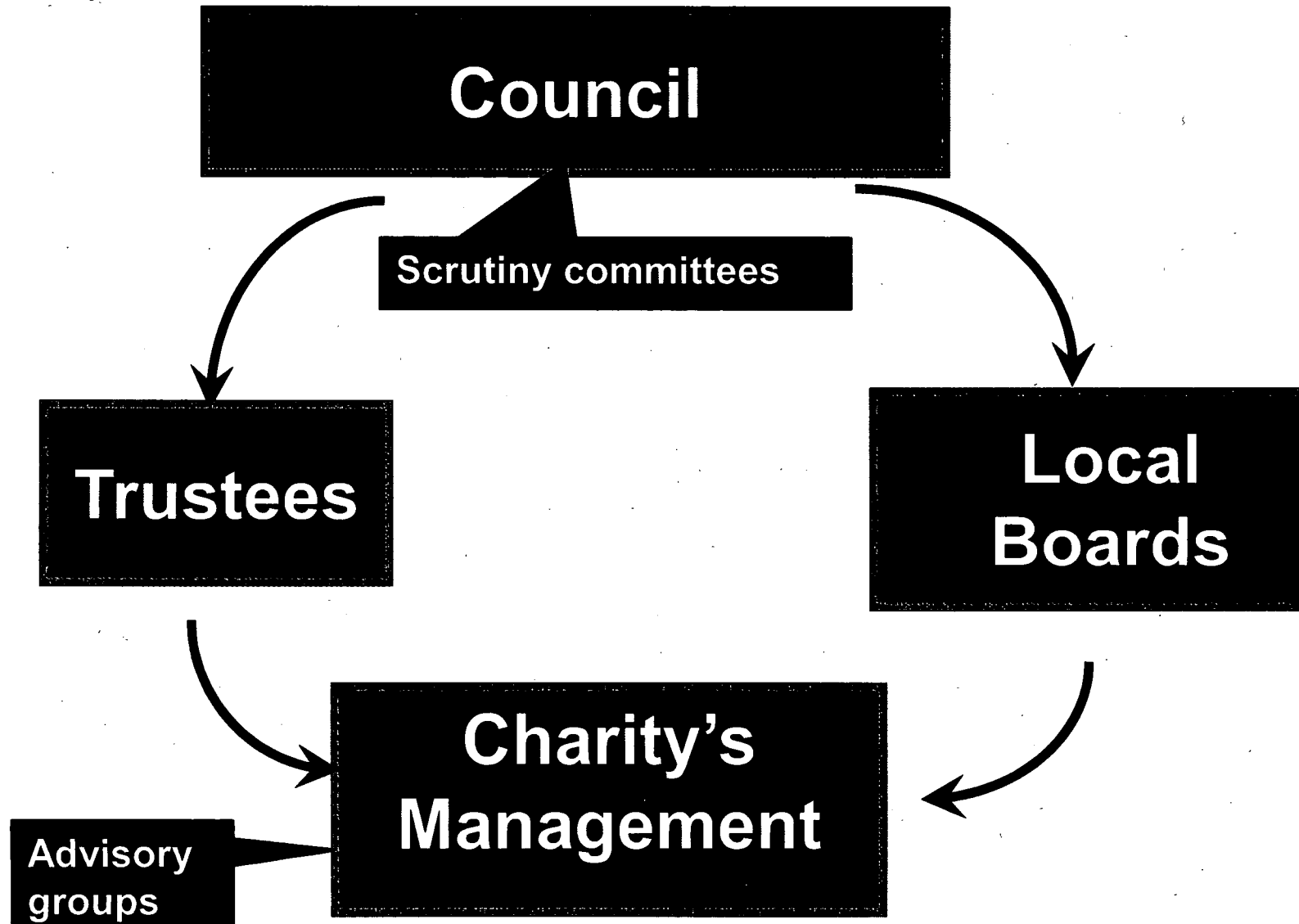
**to protect and promote our inland
waterway network and to ensure that our
unique waterway heritage will always be a
valued part of local landscapes and
communities**

• Charitable objects

- To own operate and manage Inland Waterways in the United Kingdom **for public benefit, use and enjoyment** .. for navigation
- , **recreation + other leisure-time** pursuits of the public in the interests of **social welfare** ... improvement of **commerce and industry**
- To protect and conserve sites, objects and buildings of **archaeological, architectural, engineering or historic interest** ...
- To further the conservation and enhancement of the **natural beauty** of the Inland Waterways and the **conservation of flora, fauna and geological or physiographical features** of special interest
- To promote encourage ... **restoration** of the Inland Waterways ...for the **public benefit**.
- **To educate** the public about the Inland Waterways, their history, development, use and operation



Governance Structure



Council Functions

- Appoint (and hold accountable) the Board of Trustees
- Monitor fulfilment by Charity of its charitable purposes
- Help shape policy by ...
 - debating strategy or principle, providing guidance to Trustees
 - raising issues of concern
 - providing a sounding board to help Trustees develop proposals and policy

Proposed Council Composition

Constituency		No. of council members
1.	Private boating	4 - 6
2.	Other water users – sailors, canoeists anglers, rowers	2 - 3
3.	Towpath users – cyclists, walkers, horse riders	2 - 3
4.	Boating business	3 – 4
5.	Built heritage	2 - 3
6.	Environment / conservation	2 – 3
7.	Local government	2 – 4
8.	Other statutory users	2 – 3
9.	Chairs of local waterway boards	11 – 13
10.	Employees	3 - 4
11.	Co-options	3 – 5
12.	TOTAL	36 - 50

Trustees

- Appoint the executive
- Set policy and strategy
- Appoint local boards
- Approve business plans

8-12 normally serving two 3-year terms

Appointed by the Council on merit and are independent

Not remunerated

Local Boards

- Essential part of Government's plans for localisation
- Made up of local people who will hold local management to account and oversee local work
- Advisory, not managerial, but hugely influential
- Chairs of Boards will sit on NWC Council

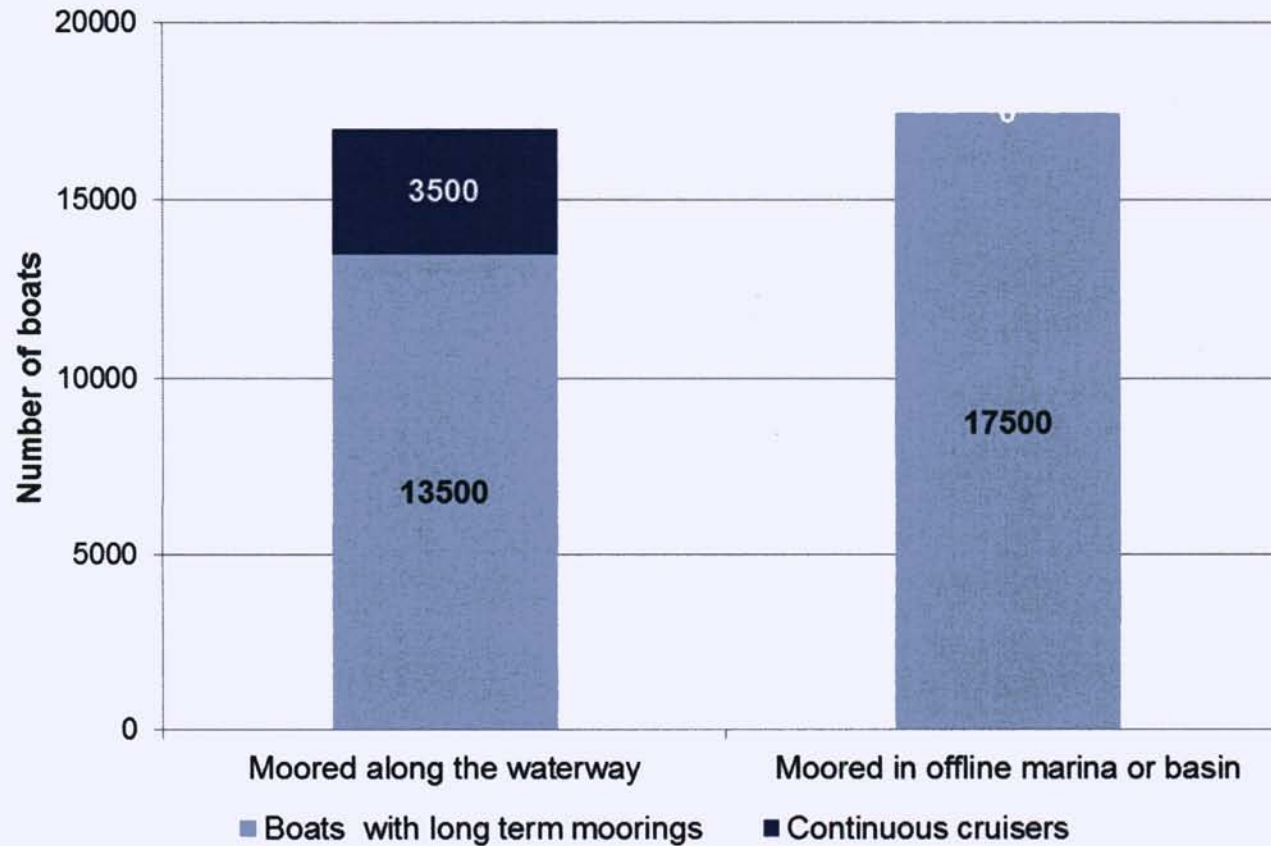
What happens next?

Early 2011	Appointments Panel named
Early 2011	Defra launch consultation
April 2011	7 Interim Trustees appointed
July 2011	Funding Agreement finalised
September 2011	Council make up agreed and appointment process underway
October 2011	Local Board make up agreed and appointment process underway
December 2011	Council, Trustees, Local Boards all appointed
January / February 2012	Council, Trustees, Local Boards induction, training, pre-meeting
April 2012	NWV 'Go Live'



PART TWO: LOCAL MOORINGS PLANS

Boats with long term licences, England & Wales



Changes since 2006:

- Boats licensed up by 4,000
- An additional 4,800 marina berths opened
- An additional 2,000 continuous cruisers

Download from:

www.britishwaterways.co.uk/mooringspolicies



POLICIES FOR MOORINGS ALONG THE BANKS OF BW WATERWAYS

Related documents:

1. Explanatory notes and background to moorings policies
2. Implementation information (to follow)
3. Residential Use of Waterways – An Advisory Document (AINA, Sept. 2010)
4. Mooring Guidance for Continuous Cruisers

CONTENTS

Long term moorings:

- Strategic aims
- Supporting policies
 - Online mooring reduction
 - Residential moorings

Short term towpath moorings:

- Strategic aims
- Supporting policies
 - Enforcement processes
 - Charges for extended stays
 - Local mooring strategies
 - Mooring zones
 - Transient mooring permit

Long term moorings

Strategic aims

- (1) Facilitate growth in supply of offline moorings to meet increases in demand and to reduce pressure for mooring along the line of the waterway. Work with the private sector to provide a wide choice of moorings to meet the needs of boaters

Supporting policies

Online mooring reduction

1. New online moorings are acceptable only if all of the following criteria apply

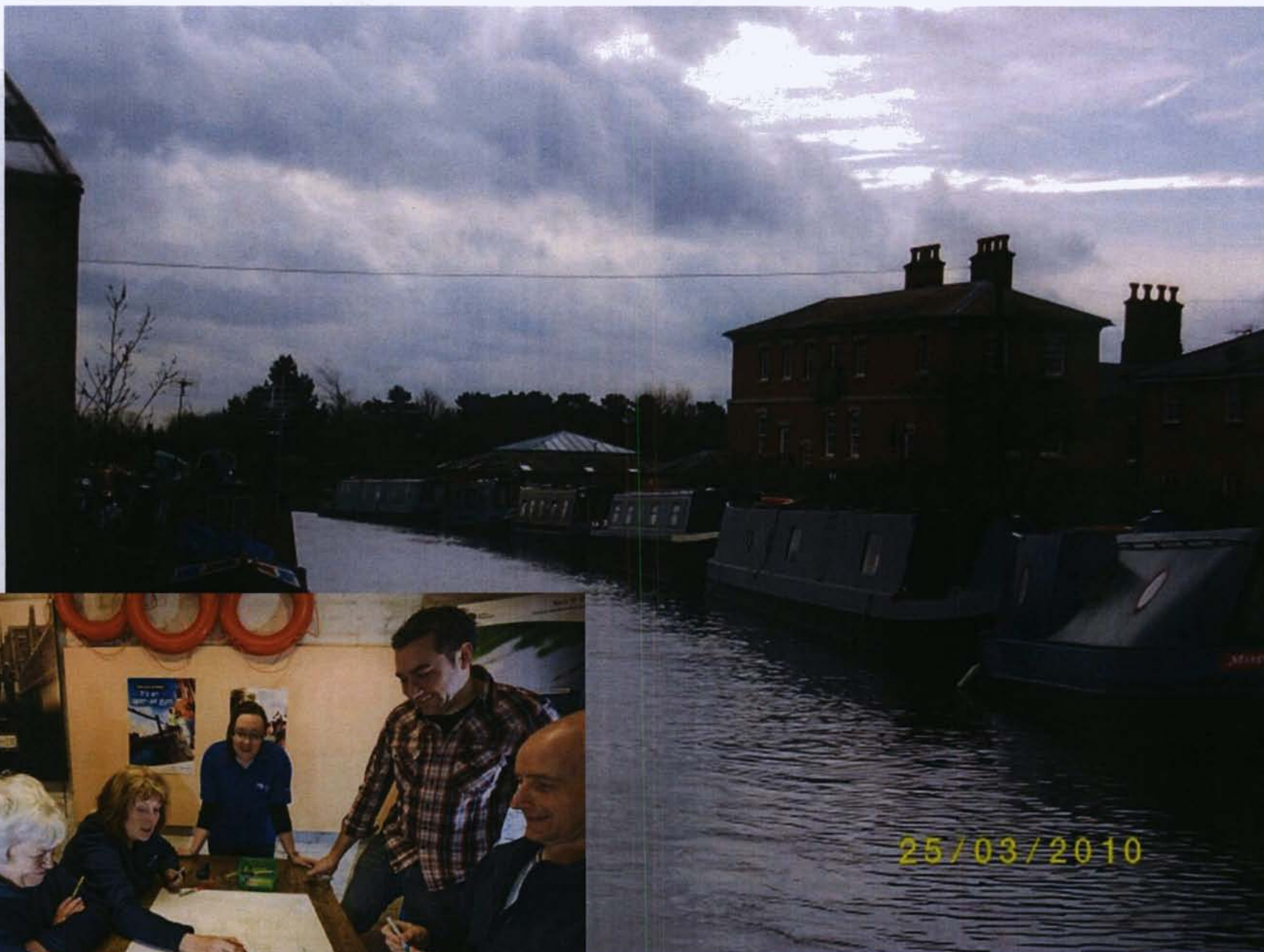
- (a) there is clear excess demand for moorings in the area with no vacancies at comparable BW or third party sites.
 - (b) there is no prospect in the short or medium term of new off-line mooring development.
 - (c) there is low density of existing on-line moorings in the area
 - (d) there are no operational or environmental constraints to online moorings at the proposed location.
- Constraints include high boat traffic volumes, water availability for navigation, and navigational safety.
- ##### 2. Permitted exceptions to these criteria
- (i) Visitor moorings suitably located along the towpath or offside
 - (ii) A proportion of visitor moorings may be allocated temporarily to boats for winter months only.

Strategic aims for long term moorings

- **Facilitate growth in supply of offline moorings to meet increases in demand and to reduce pressure for mooring along the line of the waterway. Work with the private sector to provide a wide choice of moorings to meet the needs of boaters**
- **Reduce long term moorings along the towpath**
- **Increase the supply of residential moorings within suitably located and well-managed sites**
- **Ensure a level playing field between BW and private moorings providers**

Strategic aims for short term towpath moorings

- **Ensure that casual moorings are available where needed to meet the needs of cruising boaters and holiday-makers**
- **Reduce the extent of unauthorised mooring alongside the towpath.**
- **Increase local communities' involvement in decisions about the designation of casual mooring maximum stay times and about the siting of long term moorings.**



25/03/2010

